



HYPERWARE-II AND USB DRIVER INSTALLATION

CD OVERVIEW

This CD contains all of the software and documentation required for the IntelliLogger family of Data Loggers. It includes the HyperWare-II software and manual along with manuals for the IntelliLogger and IL-Mini. Also on this CD are several educational videos that will help you get familiar with HyperWare-II and some of the basic functions of the IntelliLogger. Please also view the readme.txt file on the CD.

HYPERWARE-II

HyperWare-II is the software program that is used to communicate and program Logic Beach data loggers and analyze data collected from the data loggers. Follow the steps below to install the HyperWare-II software and then the USB drivers from the CD.

HYPERWARE-II SOFTWARE INSTALLATION STEPS

1. Close all programs currently running on the PC.
2. Insert the CD in your CD Drive. HyperWare-II is self-installing when Windows identifies the disk in the drive.
3. Follow the on-screen instructions to install HyperWare-II. Restart the computer after installation completes.
4. Install the USB Drivers as follows.

USB DRIVER INSTALLATION STEPS

Depending on your PC Windows version, perform one of the following USB Driver Installations...

FOR WINDOWS XP...

Turn the IntelliLogger power ON and connect the USB cable between the PC and the IntelliLogger. Windows will automatically launch the "Found New Hardware Wizard". Follow the installation prompts per the following guidelines:

1. Choose to NOT have Windows search for software at this time.
2. Select "Install from a list or specific location (Advanced)".
3. Choose to search for the driver at

C:\Program Files\Logic Beach\HyperWare-II\USB Device Driver for Windows XP

It will likely be necessary to "Browse" and select this folder location. Note: This location assumes a default HyperWare-II installation. If HyperWare-II was installed at a different location, the path will deviate accordingly.

4. When notified that this software has not been tested for compatibility, select "Continue Anyway".
5. NOTE: After the wizard has finished installing this first driver, the whole process will automatically initiate and a sequence repeat is necessary in order to install a SECOND driver. **This Second driver must be installed for proper operation.**

6. Upon completion of the installation of the two drivers, advance to the [Establishing a PC to IntelliLogger Connection](#) section below.
7. In the event that a PC to IntelliLogger connection can not be established (per below) check that the drivers are listed within the Control Panel / Device Manager and that no warning icons flag the drivers in the list.
8. If Warning flags are indicated in the Device Manager installed device listing, delete the drivers and reinstall starting at Step 1 above. Alternatively,

FOR WINDOWS 7...

WIN7 DRIVER SEARCH MODIFICATION

Before starting the USB driver installation, it is highly recommended that you temporarily modify the default method with which Windows finds drivers. Temporarily setting Windows to "Never install driver software from Windows Update" will significantly reduce the wait time that is incurred. By default, Windows will search the network for drivers that it won't find. You can change this setting back to the original setting after installing the drivers. If you choose not to do this you can expect delays up to 5 minutes during the USB driver installation while Windows searches. This extremely slow USB installation is a known (and typically undesirable) shortcoming in Windows 7.

To temporarily modify how Windows finds drivers, go to the Control Panel and select "System". Under "System Properties" select the "Hardware" menu and then "Device Installation Settings". Now select to "Let you choose, and never have Windows install driver software from Windows Update".

WIN7 USB DRIVER INSTALLATION

Turn the IntelliLogger power ON and connect the USB cable between the PC and the IntelliLogger. Windows will display the message "Device driver software was not successfully installed". Go to the Control Panel and then Device Manager. Under "Other Devices" you will notice that the IntelliLogger is listed. Double Click on "IntelliLogger" to display the Properties box. Follow the installation prompts per the following guidelines.

1. Select "Update Driver".
2. Select "Browse my computer for driver software".
3. Choose to search for the driver at:

C:\Program Files X86\Logic Beach\Hyperware-II\USB Device Driver for Windows 7.

It will likely be necessary to "Browse" and select this folder location. Note: This location assumes a default Hyperware-II installation.

4. When notified by Windows Security that "Windows can't verify the Publisher of this driver software", select "Install this driver software anyway".
5. After Windows has finished installing the "Logic Beach IntelliLogger" driver software, it is now necessary to return to the Device Manager and Double Click on "USB Serial Port" under "Other Devices".
6. The "USB Serial Port Properties" Box will display. Select "Update Driver" and repeat the same steps to install this second driver. **This Second driver must be installed for proper operation.**

If a USB connection is now made to a different IntelliLogger, Windows will automatically install the drivers quickly without the manual steps described above.

Note: When you are finished installing the drivers for your IntelliLogger(s) you can restore the default method which Windows finds drivers (Control Panel/Settings, etc as described above).

FOR WINDOWS 8...

Turn the IntelliLogger power ON and connect the USB cable between the PC and the IntelliLogger. Now go to the Control Panel, select "Device Manager" and click on "Other Devices". You should see the IntelliLogger listed. Double Click on "IntelliLogger" to display the Properties box. Follow the installation prompts per the following guidelines.

1. Select "Update Driver".
2. Select "Browse my computer for driver software".
3. Choose to search for the driver at

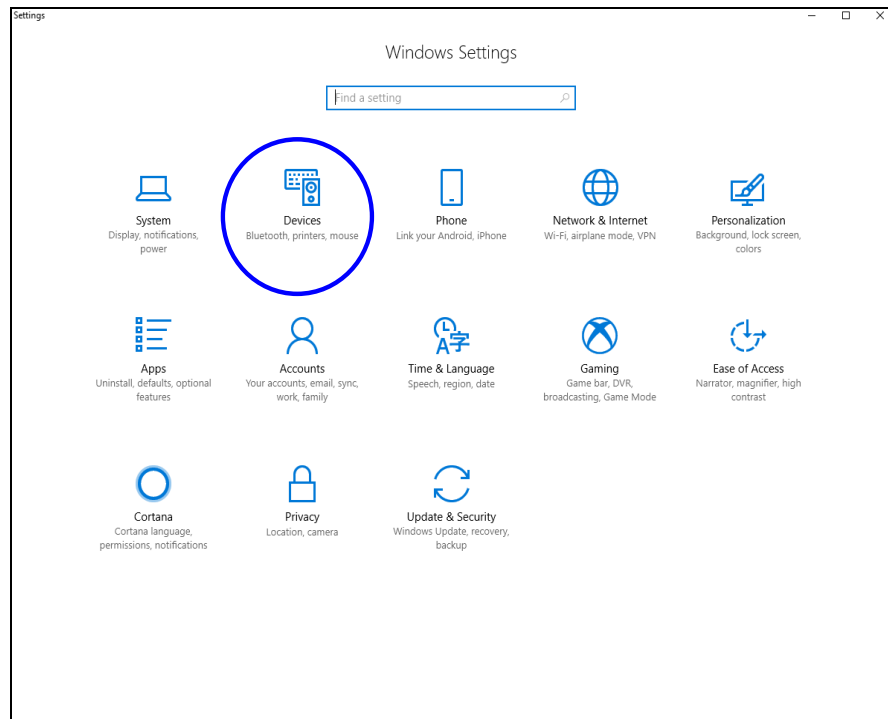
C:\Program Files X86\Logic Beach\Hyperware-II\USB Device Driver for Windows 8 & 10.

It will likely be necessary to "Browse" and manually select this folder location. Note that this location assumes a default HyperWare-II installation. If HyperWare-II was installed at a different location, the path will deviate accordingly.

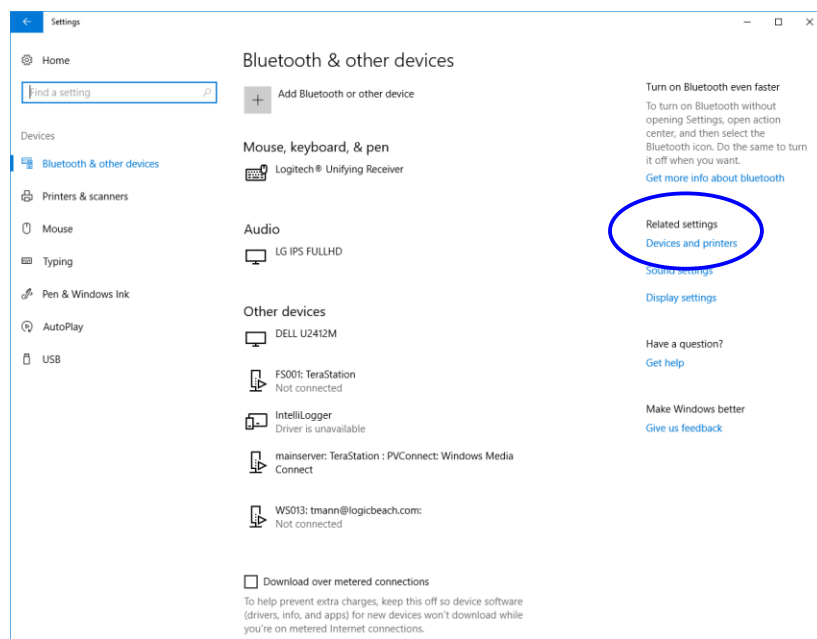
4. After Windows has finished installing the "Logic Beach IntelliLogger" driver software, it is now necessary to return to the Device Manager and Double Click on "USB Serial Port" under "Other Devices".
5. The "USB Serial Port Properties" Box will now be displayed. Select "Update Driver" and repeat the same steps to install this second driver. **This Second driver must be installed for proper operation.**

FOR WINDOWS 10...

Turn the IntelliLogger power ON and connect the USB cable between the PC and the IntelliLogger. Windows will attempt to install the USB Drivers and you may notice a small pop up box in the lower right corner. If this is the first time installing USB drivers for the IntelliLogger you will need to step through the following driver installation procedure:



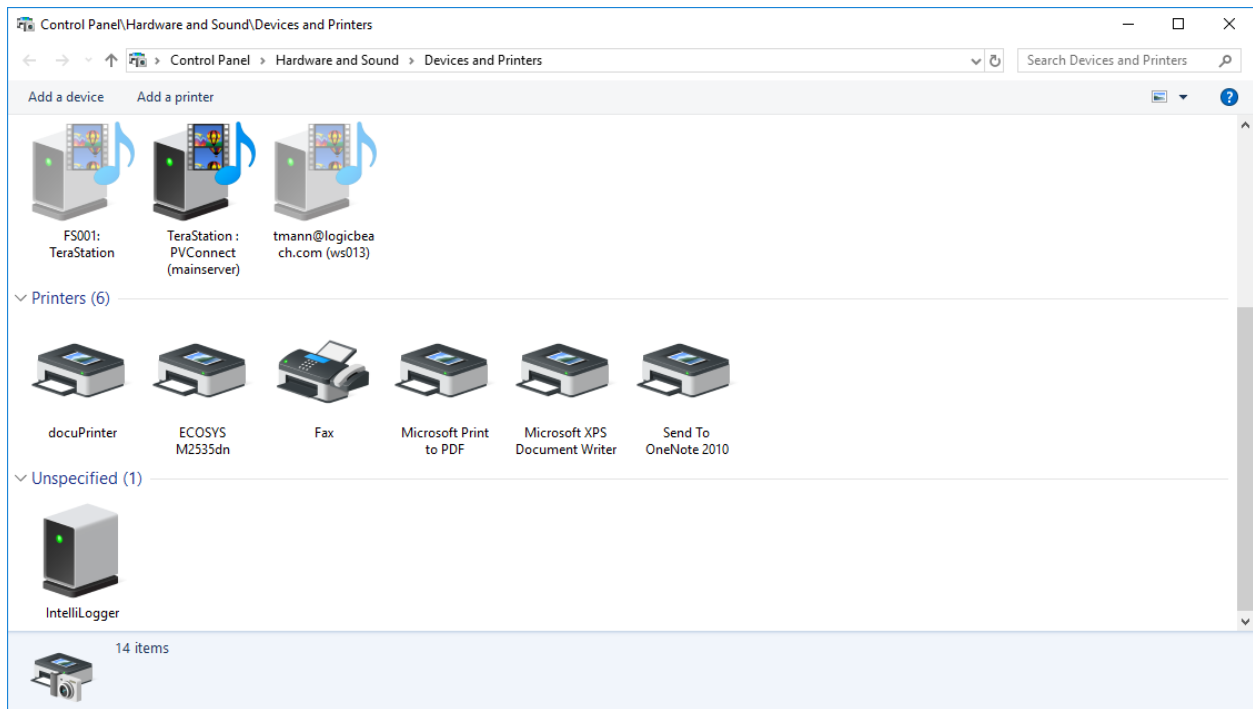
Open “Windows Settings” and Select the “Devices” Group



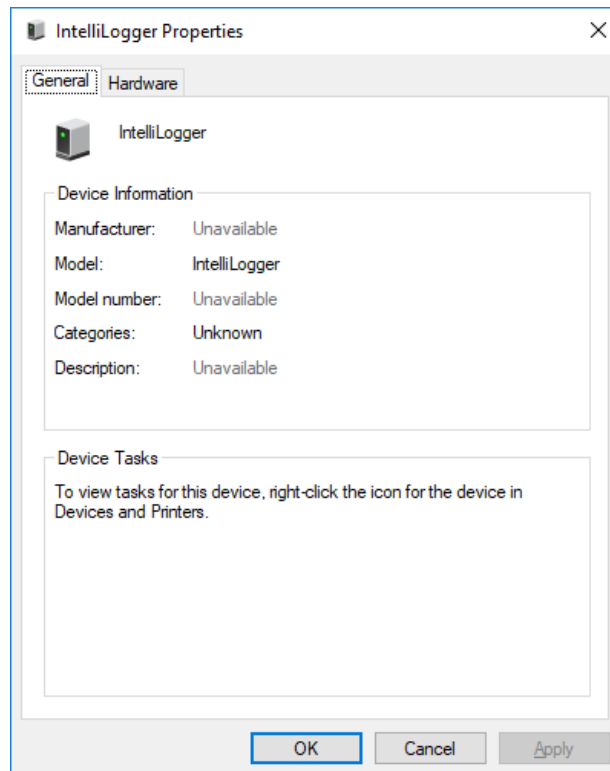
On the right side, choose “Devices and Printers” under “Related Settings”.

LOGIC BEACH INCORPORATED

8363 - 6F Center Drive La Mesa, CA 91942 | Tel: 619-698-3300 | Fax: 619-469-8604 | www.logicbeach.com



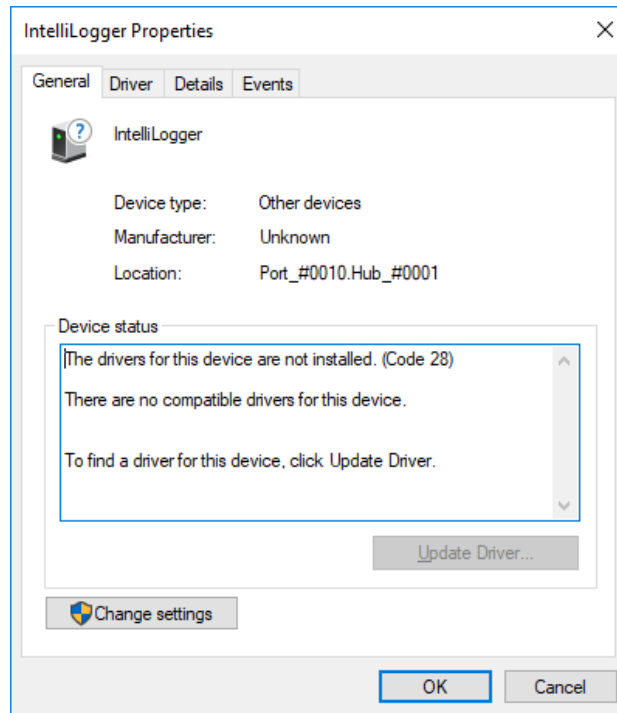
Right Click on the “IntelliLogger” Icon and choose “Properties” at the bottom of the pop-up.



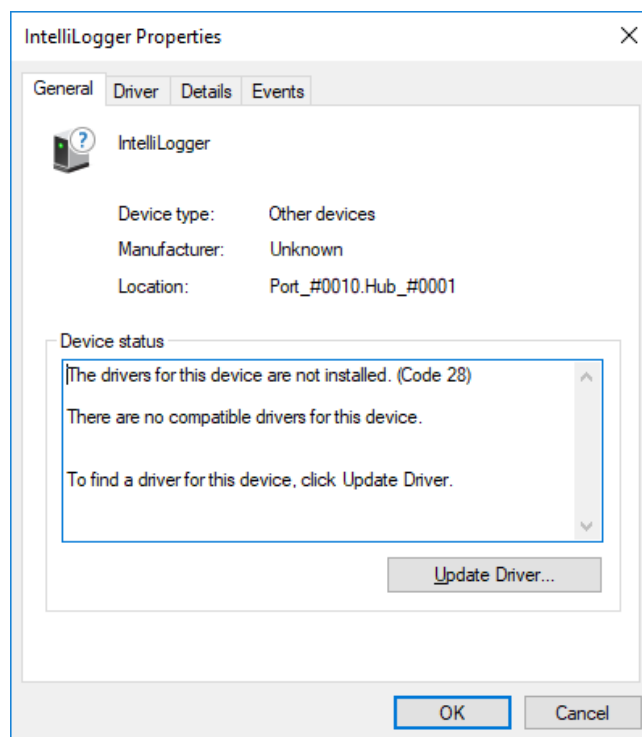
Choose the “Hardware” tab. Now select “IntelliLogger” and then “Properties”.

LOGIC BEACH INCORPORATED

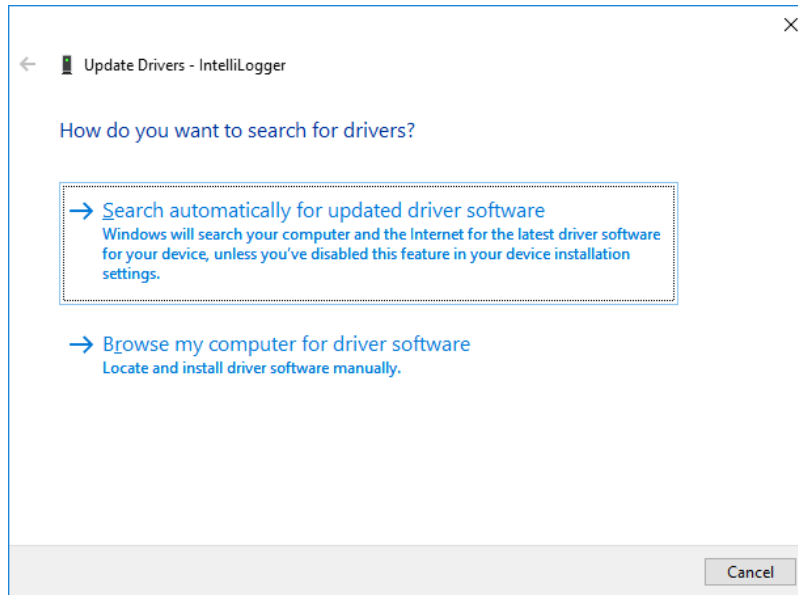
8363 - 6F Center Drive La Mesa, CA 91942 ■ Tel: 619-698-3300 ■ Fax: 619-469-8604 ■ www.logicbeach.com



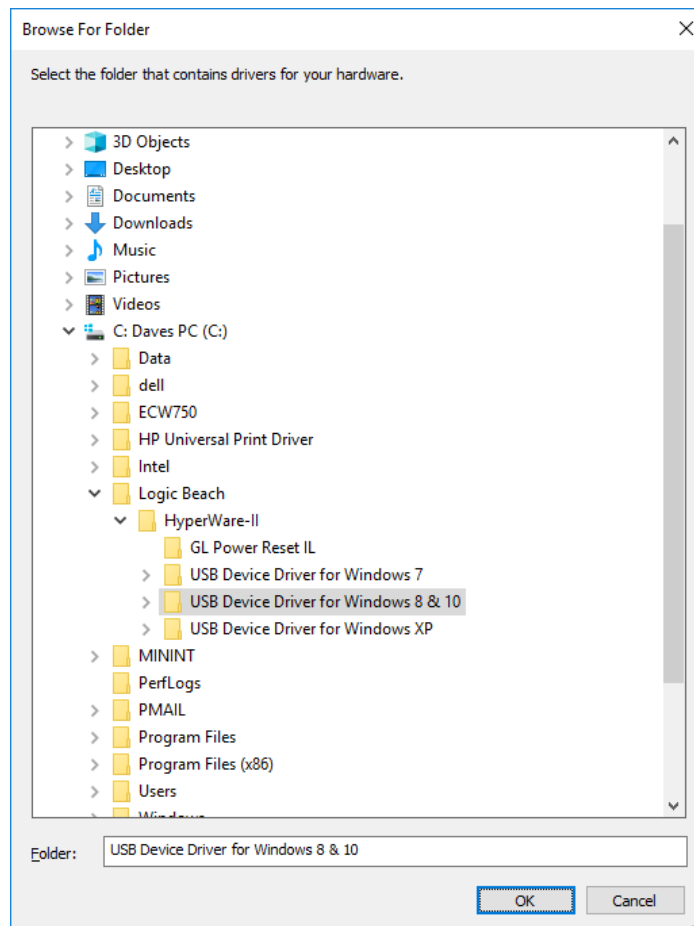
Click “Change Settings” if “Update Driver” is grayed out.



Click “Update Driver”.



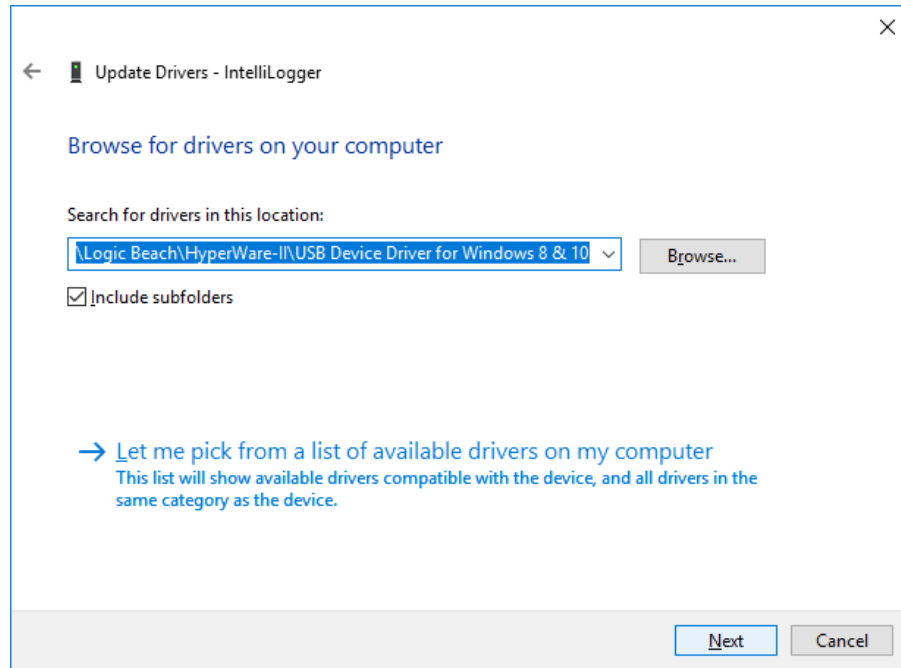
Choose “Browse my Computer for Driver Software” and locate the HyperWare-II directory under Logic Beach where the Windows 8 & 10 drivers reside.



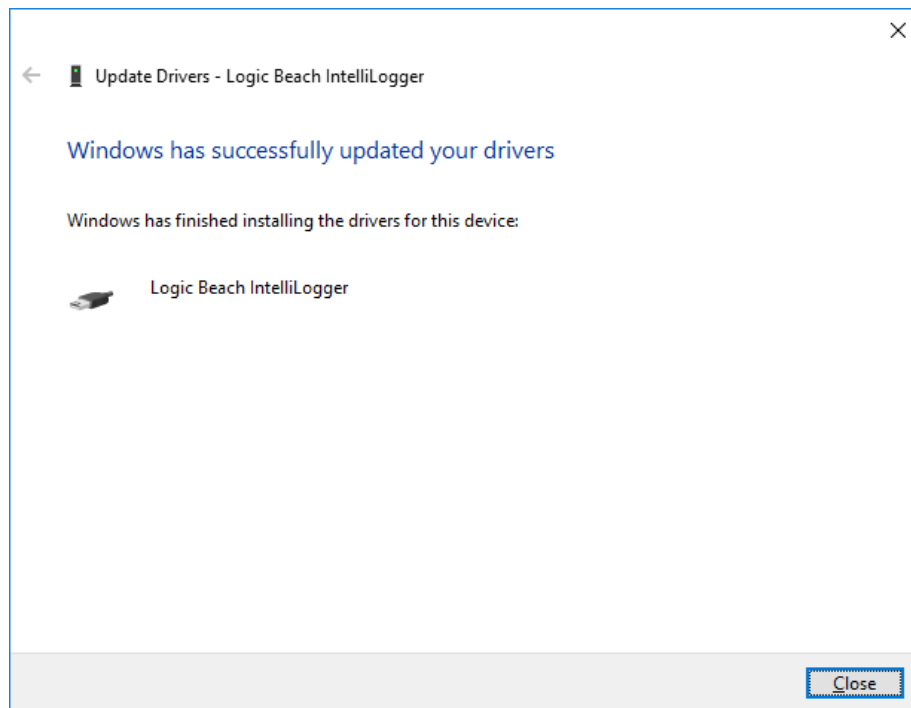
Select the folder “USB Device Driver for Windows 8 & 10”. Click OK.

LOGIC BEACH INCORPORATED

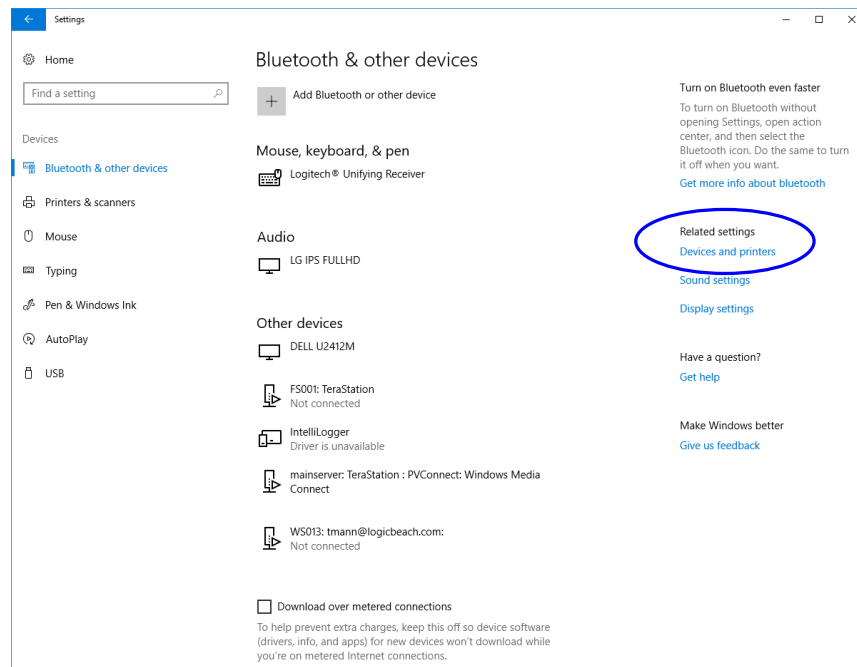
8363 - 6F Center Drive La Mesa, CA 91942 | Tel: 619-698-3300 | Fax: 619-469-8604 | www.logicbeach.com



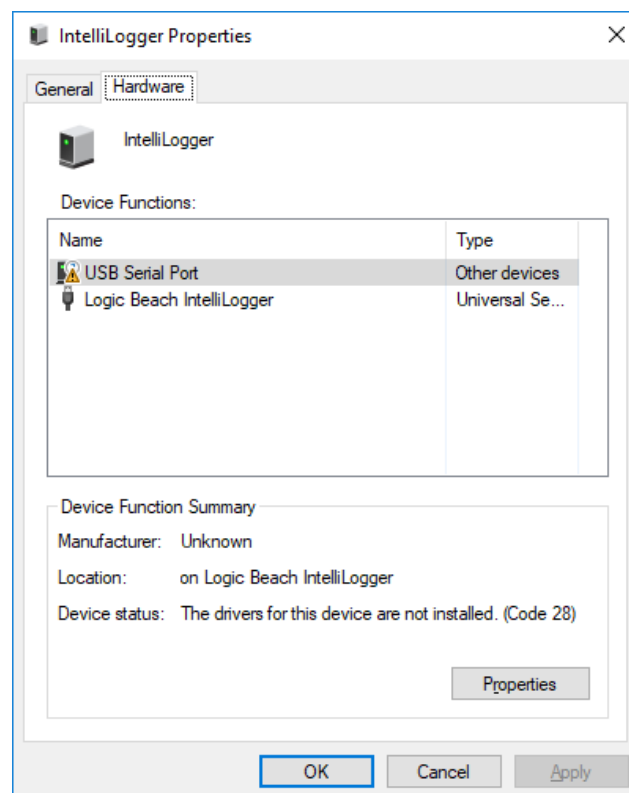
Once selected, click “Next” and the drivers will be installed. The following success dialog will then be displayed.



Close all the dialogs back to “Devices” (Bluetooth & other Devices). A second USB driver is now to be installed.



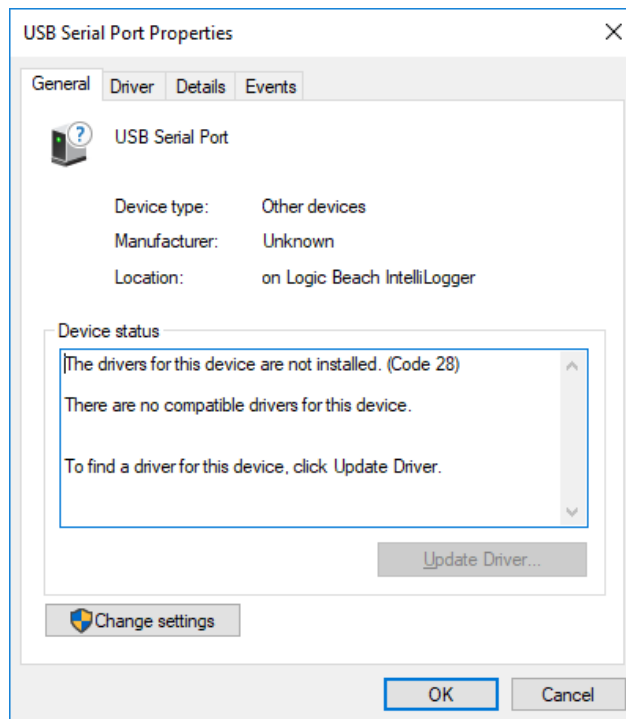
Select “Devices and Printers” under “Related Settings” over on the right side again.



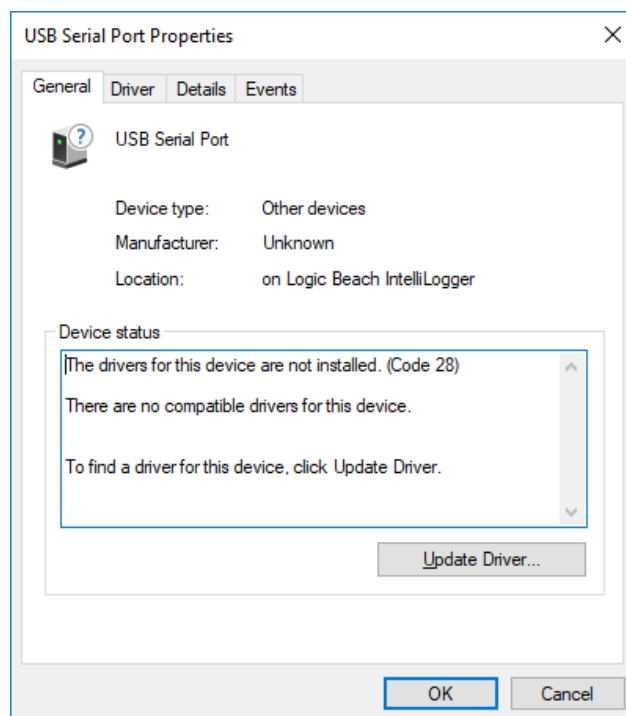
The dialog above shows that the USB Serial Port driver is not yet installed. Click “Properties.”

LOGIC BEACH INCORPORATED

8363 - 6F Center Drive La Mesa, CA 91942 | Tel: 619-698-3300 | Fax: 619-469-8604 | www.logicbeach.com



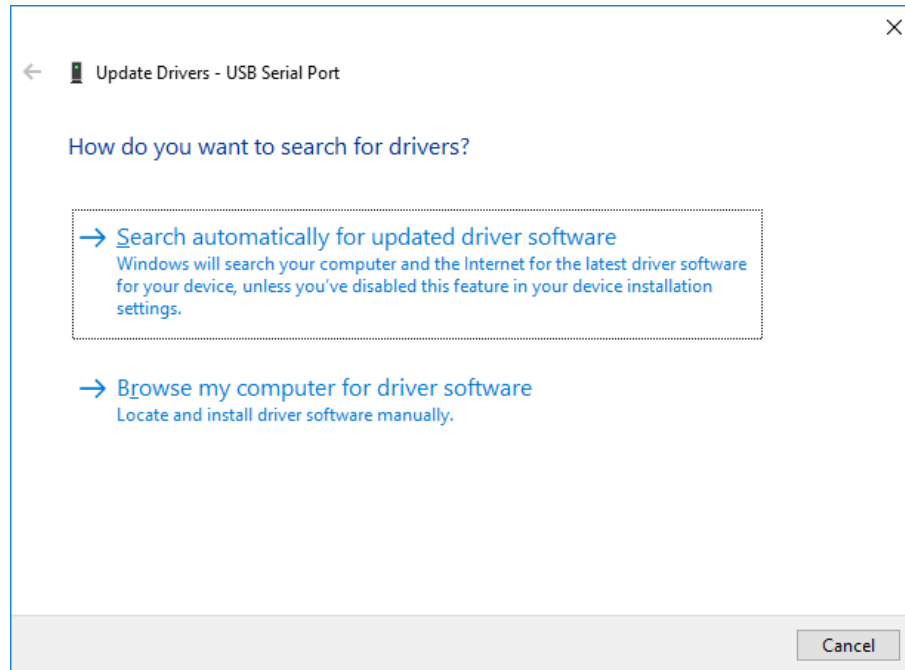
Select “Change Settings”



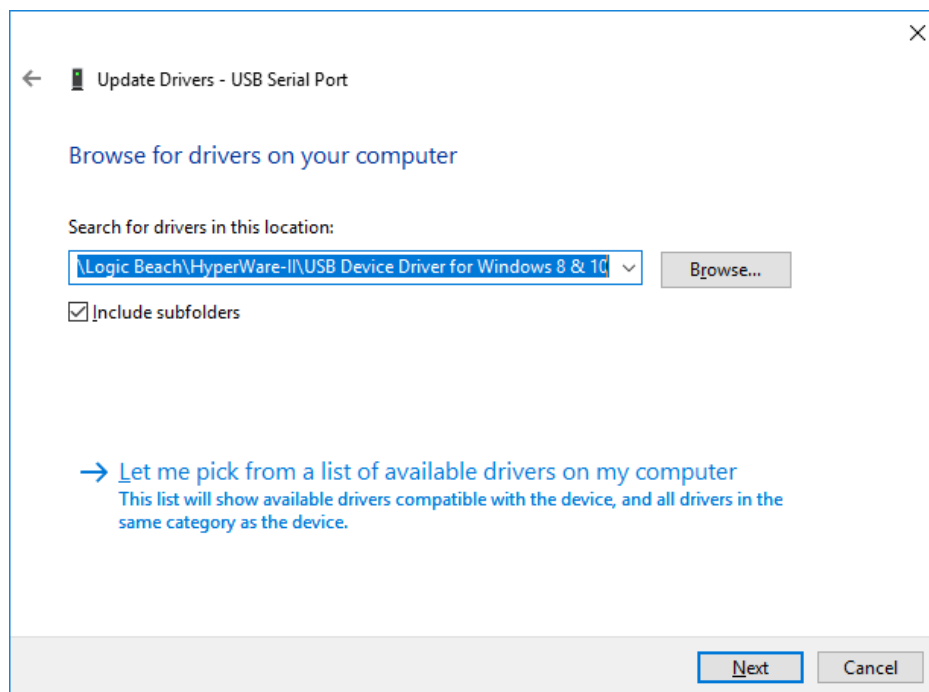
Select “Update Driver”.

LOGIC BEACH INCORPORATED

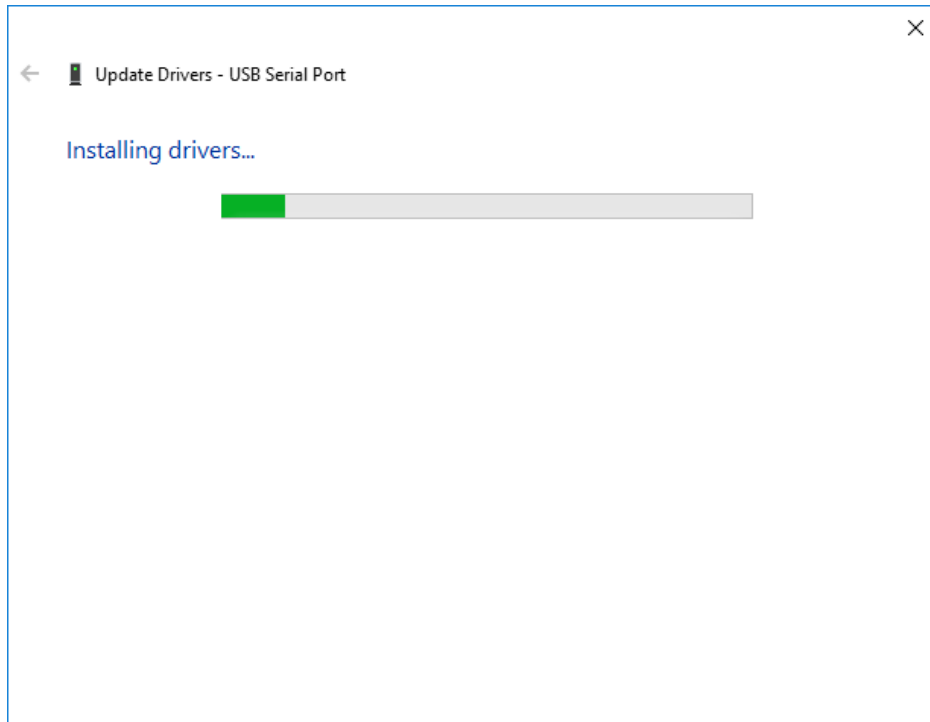
8363 - 6F Center Drive La Mesa, CA 91942 ■ Tel: 619-698-3300 ■ Fax: 619-469-8604 ■ www.logicbeach.com



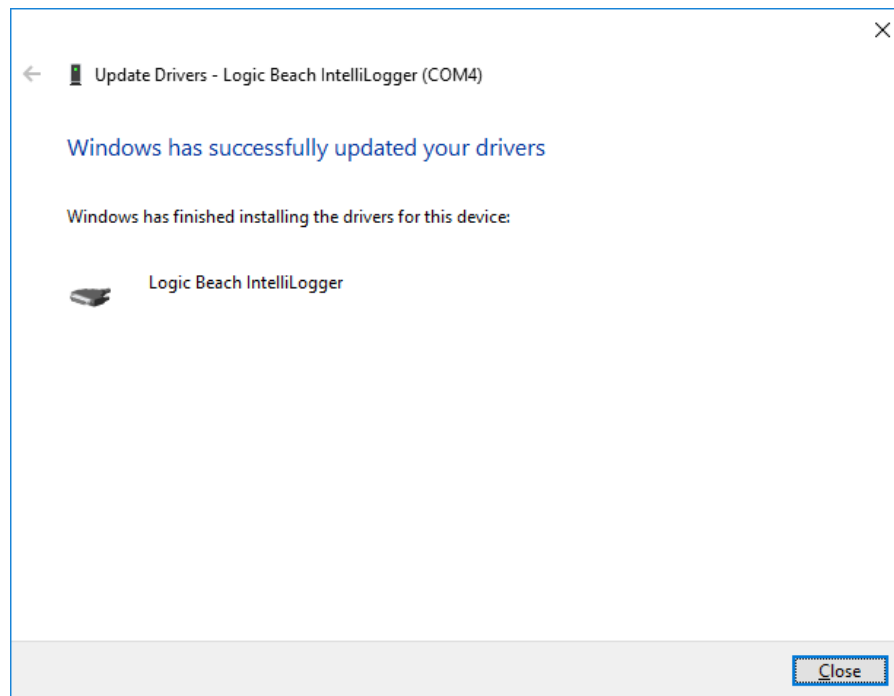
Select "Browse my Computer for Drive Software".



The correct path should already be displayed from the prior driver installation.
Click "Next".



Installing Drivers will be displayed.

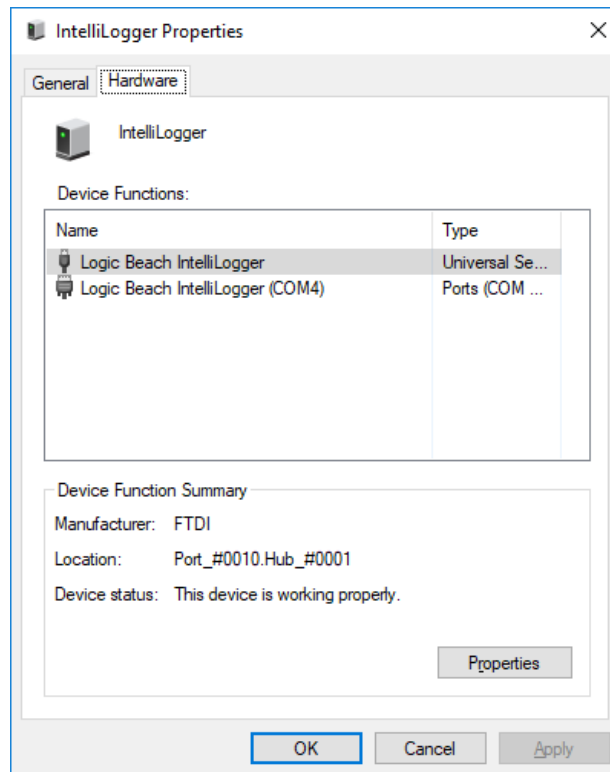


The second driver has been successfully installed. Note that a COM port number will be specified. In the above example, COM4 is specified.

LOGIC BEACH INCORPORATED

8363 - 6F Center Drive La Mesa, CA 91942 ■ Tel: 619-698-3300 ■ Fax: 619-469-8604 ■ www.logicbeach.com

You can then check that both drivers are properly installed by choosing “Printers and Devices”.

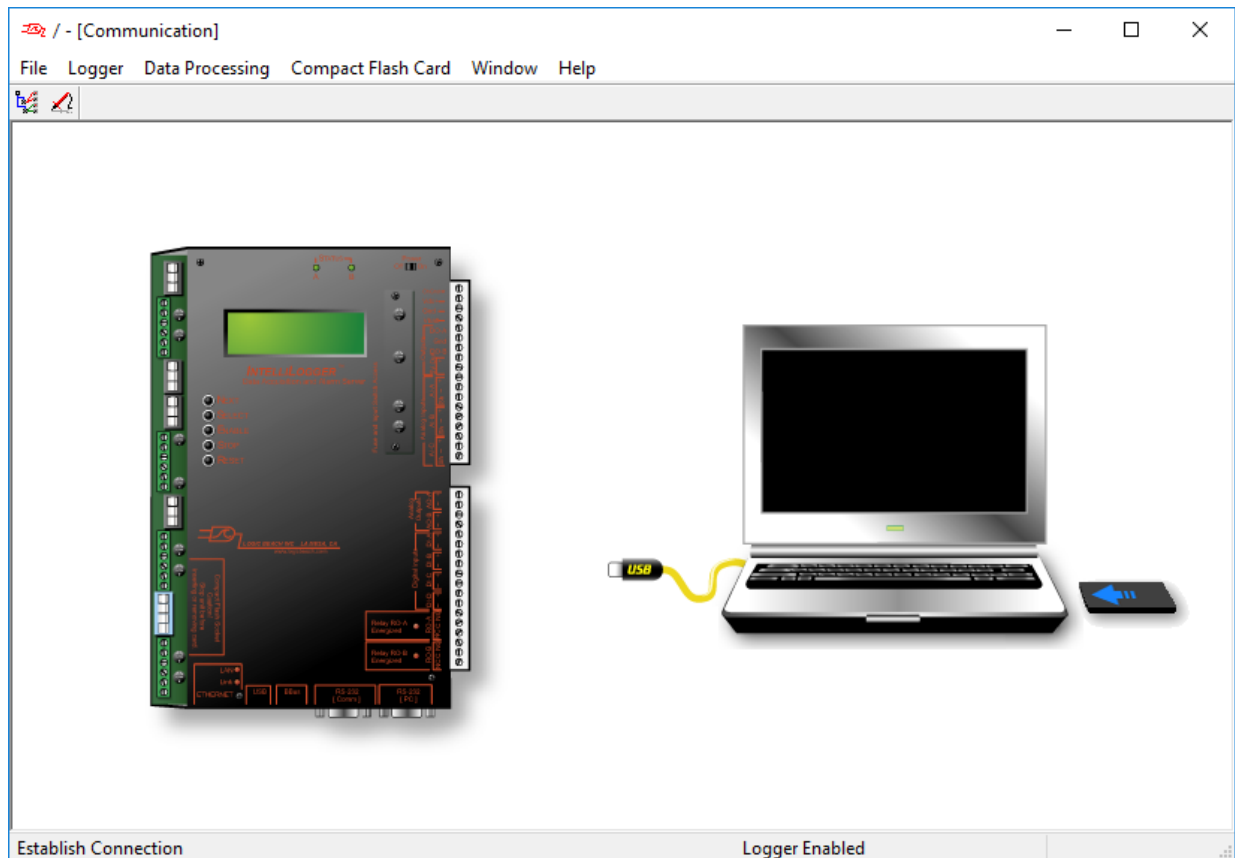


Right click on the “IntelliLogger” and select “Properties” once again. Neither device should be red flagged. Once the installation is complete, close all of the setup dialogs.

ESTABLISHING A PC TO INTELLILOGGER CONNECTION

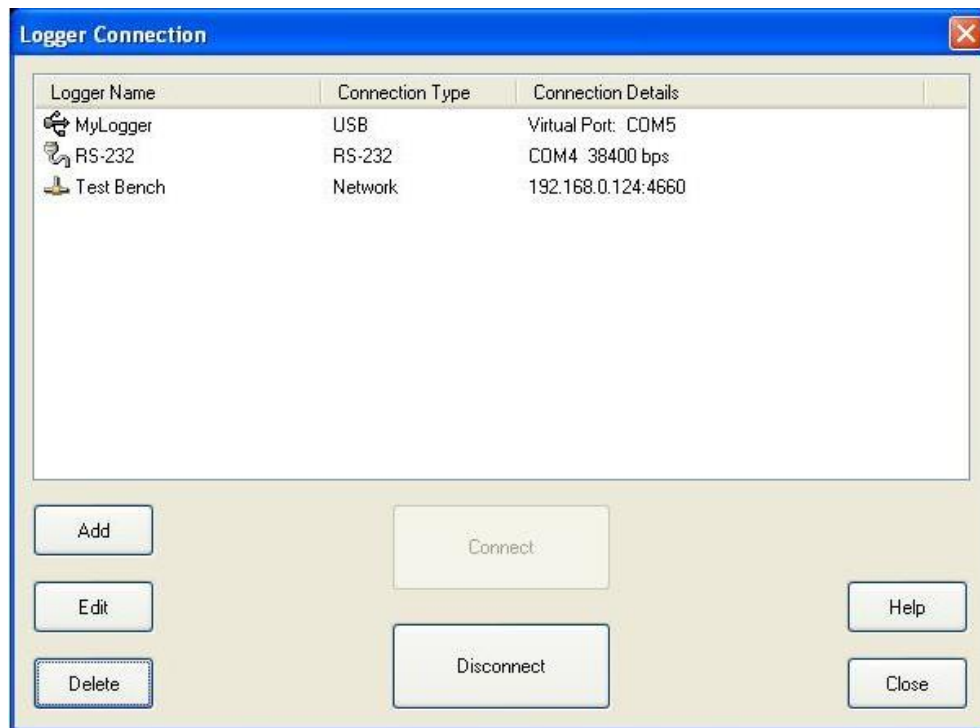
Once the USB drivers have been successfully installed a PC to IntelliLogger USB connection can be established.

Launch HyperWare-II, double click on the “Connector” Icon graphic between the PC and IntelliLogger images to open the Logger Connection dialog.



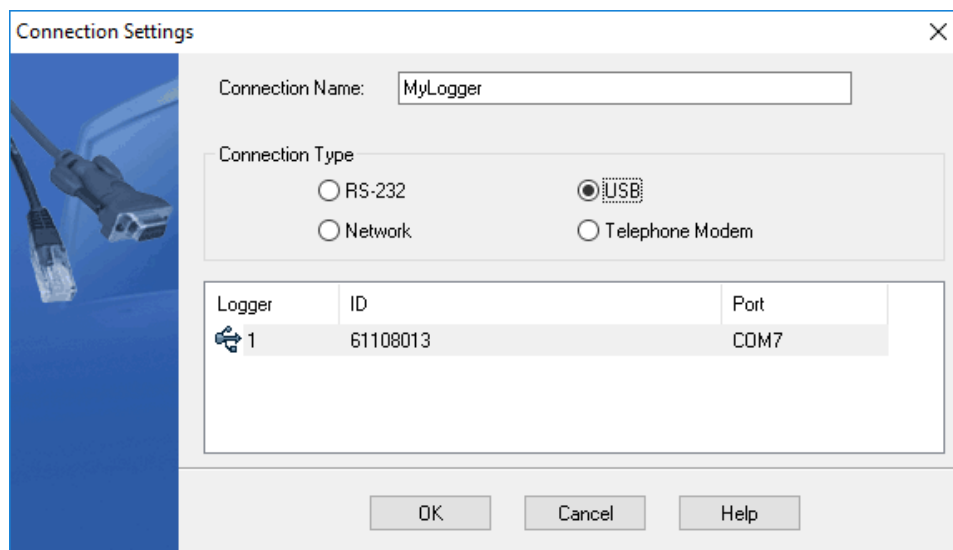
LOGIC BEACH INCORPORATED

8363 - 6F Center Drive La Mesa, CA 91942 ■ Tel: 619-698-3300 ■ Fax: 619-469-8604 ■ www.logicbeach.com



Within the Logger Connection dialog, click “ADD” and a Connection Settings dialog will open.

Select the USB radio button and The IntelliLogger Serial Number “ID” and associated COM port should be displayed



Enter a unique name for this connection (in lieu of the default MyLogger), select the USB defining line containing the COMx port and click OK.

If no logger entry displays, it could be that one or both of the USB drivers were not installed correctly. In this event:

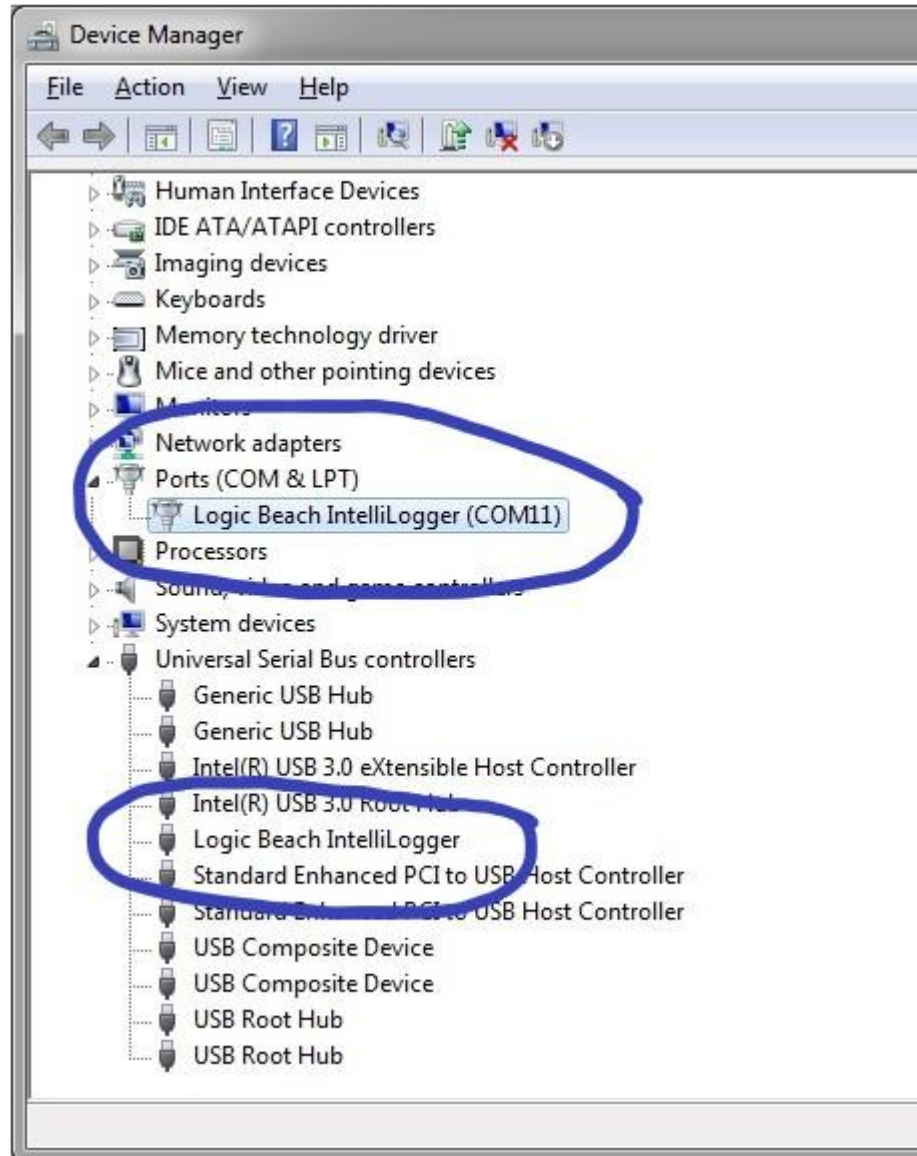
1. Open the Device Manager within the Control Panel and check that a driver called *Logic Beach IntelliLogger* is listed under the USB directory AND under the Ports directory and that neither has a warning flag or error message displayed.

For XP, to check the driver installation select:

Control Panel / System / Hardware tab / Device Manager / Universal Serial Bus controllers as well as Control Panel / System / Hardware tab / Device Manager / Ports

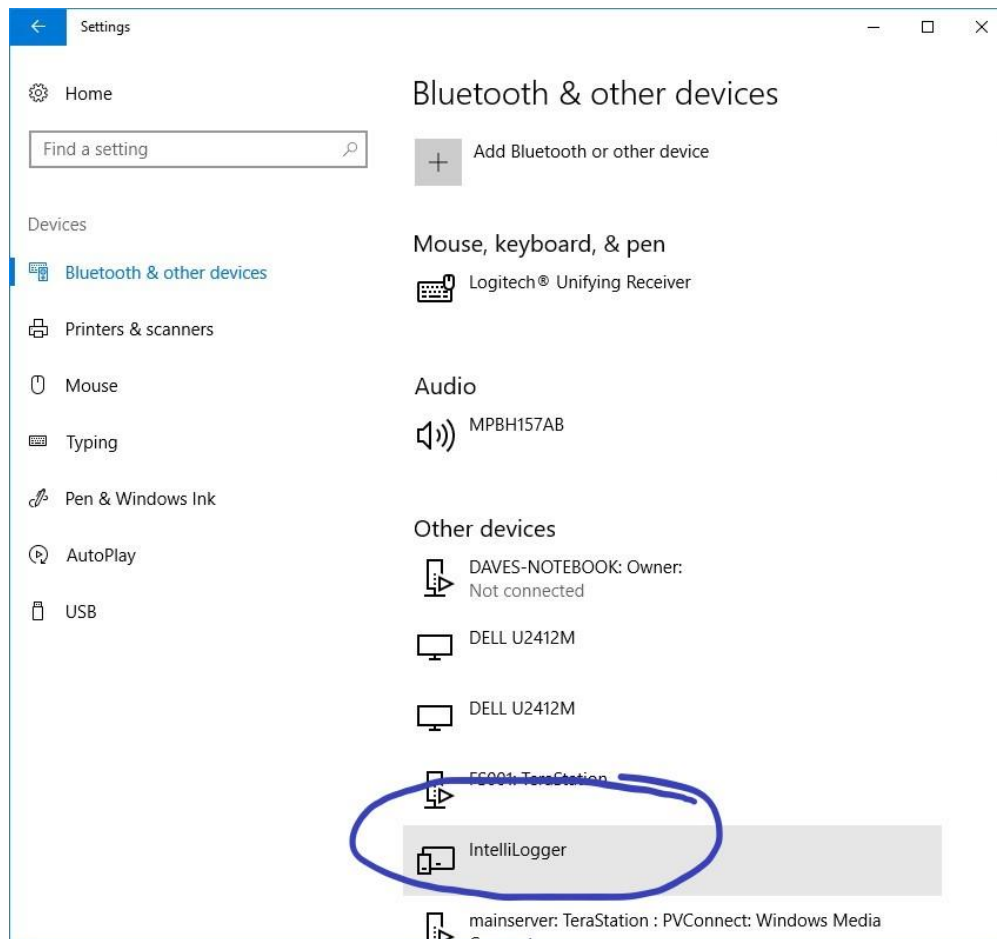
For Win7, to check the driver installation select:

Start / Control Panel / System / Device Manager / Universal Serial Bus controllers as well as Control Panel / System / Hardware tab / Device Manager / Ports



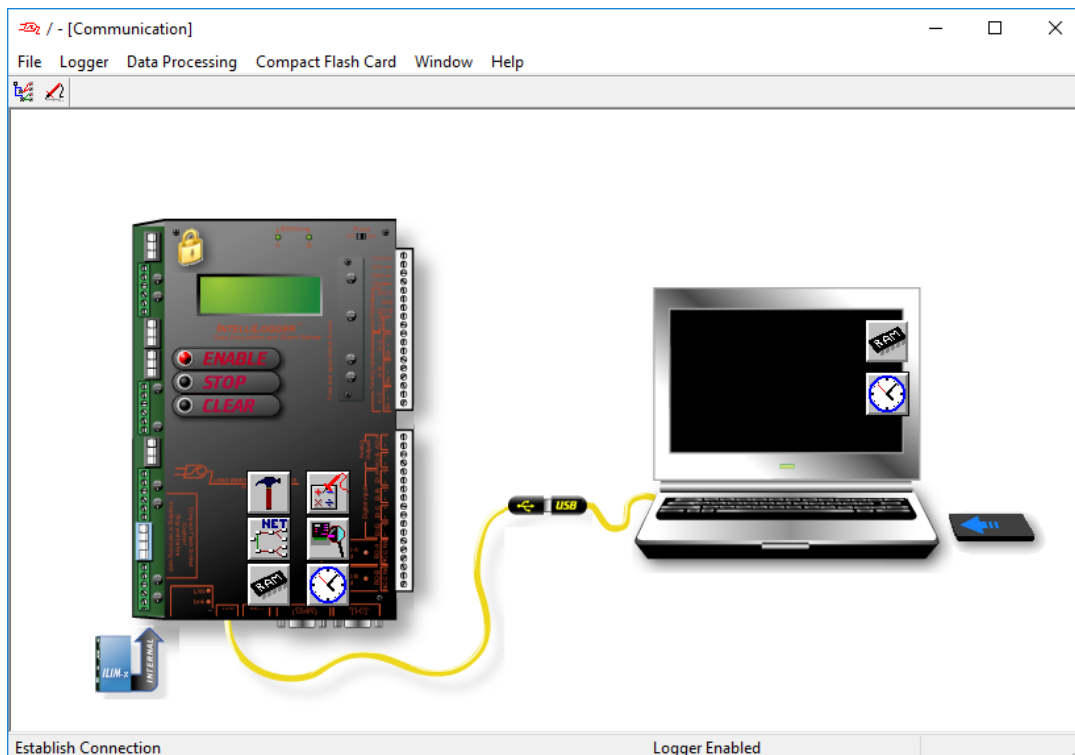
For Win10, to check the driver installation select:

Settings / Devices / USB and look for error notices AND Settings / Devices / Bluetooth and Other Devices and the IntelliLogger should display under Other Devices



2. If either has a warning flag or error indication, delete/uninstall BOTH of the drivers and repeat the driver installation process for the appropriate Windows version per above.

Assuming both drivers were installed correctly and OK is clicked from the USB Connection dialog, the dialog will close and the HyperWare-II Communications Window will display a graphic USB connection between the PC and IntelliLogger.



After this successful installation of the USB Drivers, connecting the USB cable to a different IntelliLogger will automatically install the drivers for that unit within Win7, 8 and 10. WinXP will require repeat installations for each new IntelliLogger USB connection.

CHECK FOR HYPERWARE-II UPDATES ON WWW.LOGICBEACH.COM

After you install HyperWare and the USB drivers from the CD check for HyperWare-II updates online here: <http://www.logicbeach.com/updates.htm>. If there is a later version online follow the download and installation instructions on the web page.

VIEW HYPERWARE-II TRAINING VIDEOS...

Learn HyperWare-II with over 35 minutes of PC based training. This is an excellent way to get a jump-start on programming Logic Beach data acquisition, alarming and reporting instruments. View these videos on a PC with a CD drive, sound card, speakers and Microsoft Media Player. If you do not have Microsoft Media Player, download it from <http://www.microsoft.com/windows/windowsmedia/default.aspx>. You may copy the videos to your hard drive or they may remain on the CD. The x.avi video training files are located in the HyperWare Training directory.

It is suggested to start with the "Communications" video followed by "Programming" and then the remaining videos.

For further information on installation, operation or troubleshooting refer to the detailed User Manual on this CD and if necessary contact Logic Beach Incorporated where our Technical Staff will assist you in resolving any other issues!

Thank you for your purchase of this Logic Beach Incorporated data acquisition, alarming and reporting instrument!

LOGIC BEACH INCORPORATED

8363 - 6F Center Drive La Mesa, CA 91942 ■ Tel: 619-698-3300 ■ Fax: 619-469-8604 ■ www.logicbeach.com

File:

HyperWare-II Installation Guide_Win XP,7 ,8 and 10_2018_04-04-B.doc

Document Revision History

4-25-14dgp: First release for comment

5-16-16: Content update

2-16-18JW: Content update

4-3-18dp: Format and content update

4-4-18dp: Added dialogs